

Model: **6471L**

**T&E
TOOLS**[®]
www.tetools.com

CYLINDER HEAD SURFACE RECTIFIER WITH PROTECTION COVER (900MM)



1. FEATURES

2. SPECIFICATIONS

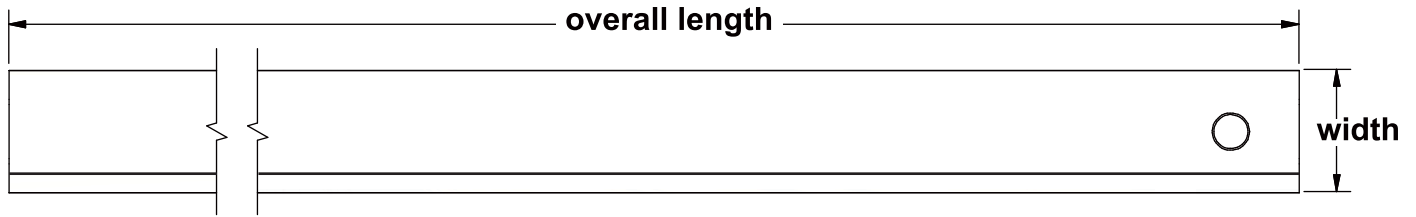
3. INSTRUCTIONS

4. APPLICATIONS

1. FEATURES

- Precise test for engine block and cylinder head when reassembling or overhauling an engine
- Work with a feeler gauge
- Suitable for inline 6-cylinder or 8-cylinder engines with more than 600mm in length, especially for pickup trucks and commercial vehicles

2. SPECIFICATIONS



Overall length	900 mm / 35.4"
Width	50 mm / 1.97"
Thickness	6 mm / 0.24"
Material	S50C steel
Tolerance	< 0.03 mm

3. INSTRUCTIONS



CAUTION



- Always read the instructions carefully before using the tool
- Ensure the working area has adequate lighting
- Keep children and unauthorized persons away from the working area
- Keep working area clean and tidy, dry and free from unrelated materials
- DO NOT allow untrained persons to use this tool kit
- Always wear eye protection that meets OSHA and ANSI Z87.1 standards
- Always wear gloves when working with the tool
- Always wear ear protection
- Disposal: Customers should follow local regulations to handle used/waste parts

- 1 Place the surface rectifier on the cylinder base (Fig. 1).
- 2 Refer to automotive manufacturer's service manual for the minimum clearance.
- 3 Slightly tilt the surface rectifier and use a feel gauge with the proper thickness. Insert the gauge into several spots to see if the clearance is acceptable (Fig. 2).

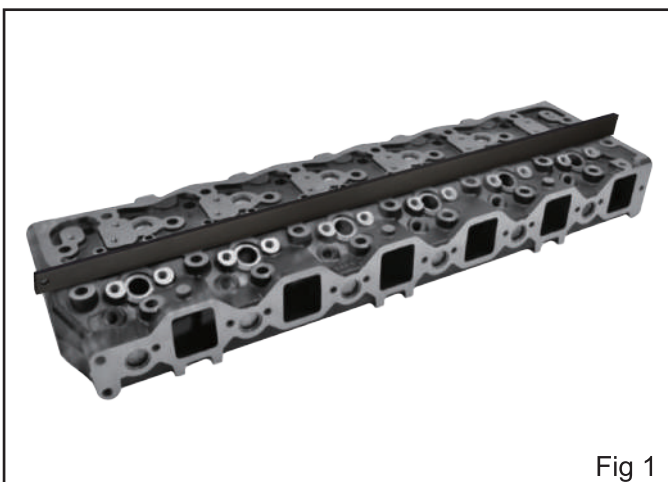


Fig 1

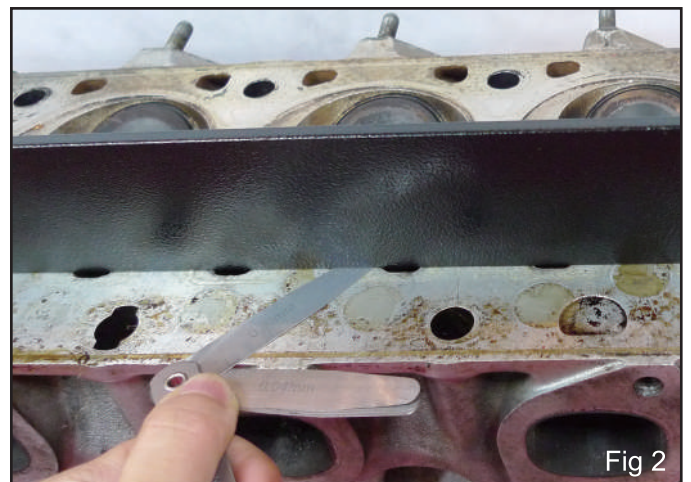


Fig 2

4. APPLICATIONS

The application below is for reference only. More vehicle applications are possible.

Make	Model / Engine	Cyl Head Length (mm)	Cyl Head Length (inch)
Ford	Expedition 8 cylinder 4.6 liter engine	≈ 760 mm	≈ 29.9"
Ford	F-150 8 cylinder 4.6 liter engine	≈ 760 mm	≈ 29.9"
Ford	Mustang 8 cylinder 4.6 liter engine	≈ 760 mm	≈ 29.9"
Freightliner	Cascadia 15L Cummins ISX/QSX	≈ 1,200 mm	≈ 47.2"
International	ProStar 15L Cummins ISX/QSX	≈ 1,200 mm	≈ 47.2"
Isuzu	6BD1 inline 6 cylinder 5.7 liter engine	≈ 850 mm	≈ 33.5"
Kenworth	T680 15L Cummins ISX/QSX	≈ 1,200 mm	≈ 47.2"
Mack	MP8 inline 6 cylinder 12.8 liter engine	≈ 1,140 mm	≈ 44.9"
Mercedes-Benz	OM457 inline 6 cylinder 12.0 liter engine	≈ 1,100 mm	≈ 43.3"
Mercedes-Benz	OM460 inline 6 cylinder 12.8 liter engine	≈ 1,100 mm	≈ 43.3"
Nissan	AMC 242 inline 6 cylinder 4.0 liter engine	≈ 750 mm	≈ 29.5"
Nissan	TD42 inline 6 cylinder 4.2 liter engine	≈ 800 mm	≈ 31.5"
Nissan	TD42T inline 6 cylinder 4.2 liter engine	≈ 800 mm	≈ 31.5"
Scania	DC13 inline 6 cylinder 12.7 liter engine	≈ 1,400 mm	≈ 55.1"
Toyota	Land Cruiser HJ45LP-K	≈ 750 mm	≈ 29.5"
Volvo Truck	D13 Series inline 6 cylinder 12.8 liter engine	≈ 1,140 mm	≈ 44.9"